

PRODUCT INFORMATION PACKET

FASCO®

Model No: D1196

Catalog No: D1196

Draft Inducer Motor, 1/30 HP, 1 Ph, 60 Hz, 115 V, 3200 RPM, 1 Speed, 3.3" Diameter, OAO



Regal and Fasco are trademarks of Regal Rexnord Corporation or one of its affiliated companies.

©2022 Regal Rexnord Corporation, All Rights Reserved. MC017097E

RegalRexnord



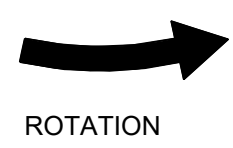
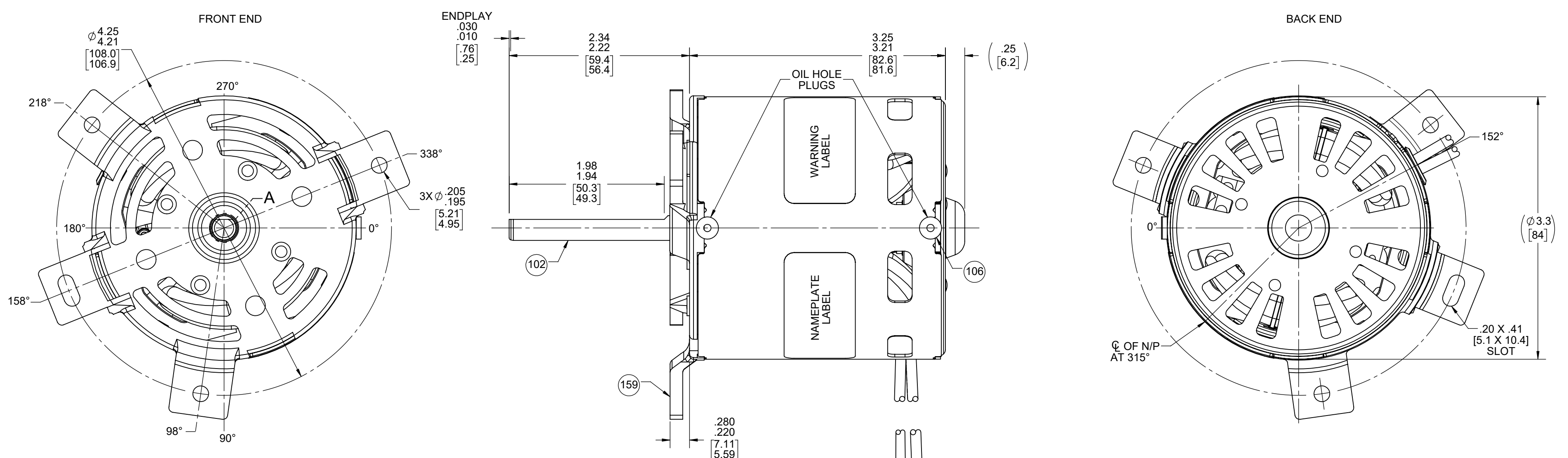
Nameplate Specifications

Output HP	1/30 Hp	Output KW	0.02 kW
Frequency	60 Hz	Voltage	115 V
Current	1.5 A	Speed	3200 rpm
Phase	1	Duty	Air Over
Insulation Class	B	Frame	3.3
Enclosure	Open Air Over	Thermal Protection	Thermally Protected
Ambient Temperature	40 °C	UL	Recognized
CSA	Y	CE	N
Number of Speeds	1		

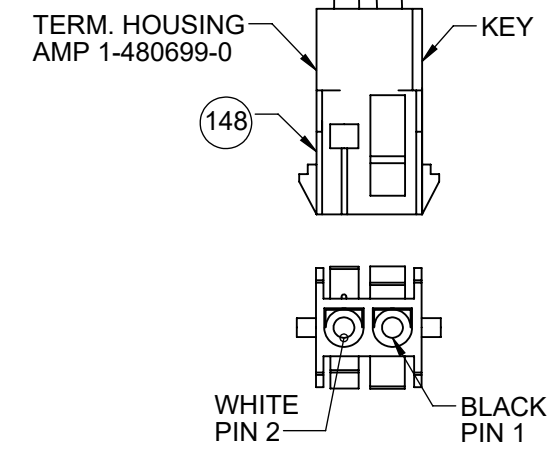
Technical Specifications

Electrical Type	Shaded Pole	Starting Method	Across The Line
Poles	2	Rotation	Counterclockwise Shaft End
Mounting	Lug	Drive End Bearing	Sleeve
Opp Drive End Bearing	Sleeve	Frame Material	Steel
Shaft Type	Flat	Overall Length	5.84 in
Frame Length	2.96 in	Shaft Diameter	0.313 in
Shaft Extension	2.31 in		
Outline Drawing	71219730	Connection Drawing	NA

This is an uncontrolled document once printed or downloaded and is subject to change without notice. Date Created:11/29/2022



LEAD MATERIAL
18 GA. 125°C 4/64 INSUL.
EPDM. (1) WHITE
AND (1) BLACK
8.50/7.50 [215.9/190.5]
W/ SOCKET TERMINALS
AMP 350537-1



- NOTES:
- MOTOR HAS 416 SS SHAFT.
 - NO PACKAGING TAPE OVER CARTON LABEL.

61305568

00464071

SAFETY WARNING
This motor must be grounded in accordance with local or national electrical codes to prevent possible injury due to electrical shock

AVERTISSEMENT DE SÉCURITÉ
Ce moteur doit être fondée sur conformément à la réglementation locale ou national électrique codes pour prévenir d'éventuelles blessures en raison de choc électrique

FASCO™

Assembled In Mexico

No. 71219730 TYPE U21B T.P. AO
115 V 60 Hz Class B
1.5 A 3200 RPM 1/30 HP
Model D1196 Max Amb: 40°C
LR6319

CUSTOMER:	FASCO DIST.	APPLICATION:	GAS FURNACE 80+								
CUSTOMER PN:	D1196	MOTOR WEIGHT:	3 LBS.								
		ENVIRONMENT:	DAMP								
HORIZONTAL	UP	MOTOR TYPE			REFERENCE SAMPLE						
		SHADED POLE									
		B 00	LA 21	FR 47	A V	S 05	C OA	E 5	B 3	A 0	
TYPICAL PERFORMANCE AT 115 VOLTS 60 HZ											
MOTOR SPEED	IDLE			LOADED			LOCKED			BREAK	
	RPM	AMP	WATT	IN OZ	RPM	AMP	WATT	IN OZ	AMP	WATT	IN OZ
	3471	1.2	73	9.30	3200	1.3	98	6.17	1.9	142	13.8

DRAWING REVISION AC	REVISION BY SDM	REV DATE/DATE 4/26/2022	TOLERANCES (EXCEPT AS NOTED): DEC. INCH mm ANGLE .X ±0.1 [±3] ±1° .XX ±0.01 [±0.3] .XXX ±0.005 [±0.13] .XXXX ±0.0005 [±0.013]	DRAWN BY MLS	Regal Rexnord Regal Beloit America, Inc.
REQUEST NUMBER ECR-0217320	APPROVED BY MLS	DATE 4/26/2022	REMOVE BURRS & BREAK SHARP EDGES: .003/.015 [.08/.38] X 45° CORNER FILLETS: R.02 [.5] MACHINED SURFACES: .125/ mm 3.2 INCH mm ARE FOR REFERENCE ONLY	DATE 1/24/2020	DESCRIPTION OUTLINE MOTOR ASSY
REQUEST NUMBER DESCRIPTION CHANGE N/P FASCO LOGO TO FASCO TM			THIRD ANGLE PROJECTION	APPROVED BY BAA	MATERIAL PROCESS/FINISH BLACK
COPYRIGHT (PER REVISION DATE) REGAL BELOIT AMERICA, INC. ALL RIGHTS RESERVED. PROPRIETARY AND CONFIDENTIAL INFORMATION - THIS DOCUMENT IS THE PROPERTY OF REGAL BELOIT AMERICA, INC. (OWNER) AND CONTAINS OWNER'S PROPRIETARY INFORMATION. ANY PERSON, CORPORATION OR OTHER FIRM RECEIVING IT IS DEEMED, BY RECEIVING IT, TO AGREE THAT IT, AND/OR ANY PART OF IT, SHALL NOT BE DISCLOSED TO ANY PERSON, CORPORATION OR OTHER ENTITY, DUPLICATED, AND/OR USED, EXCEPT AS EXPRESSLY APPROVED IN WRITING IN ADVANCE BY OWNER. THIS DOCUMENT SHALL BE RETURNED TO OWNER UPON REQUEST. IT MAY BE SUBJECT TO CERTAIN RESTRICTIONS UNDER APPLICABLE EXPORT CONTROL LAWS AND REGULATIONS.			SIZE C	DATE 1/24/2020	DRAWING NUMBER 71219730
					SHEET 1 OF 2

4

3

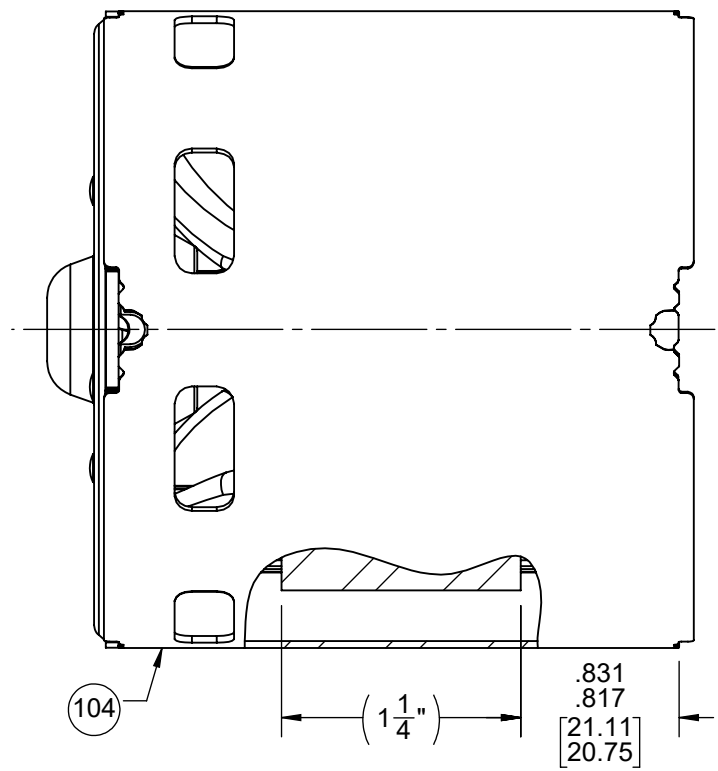
2

1

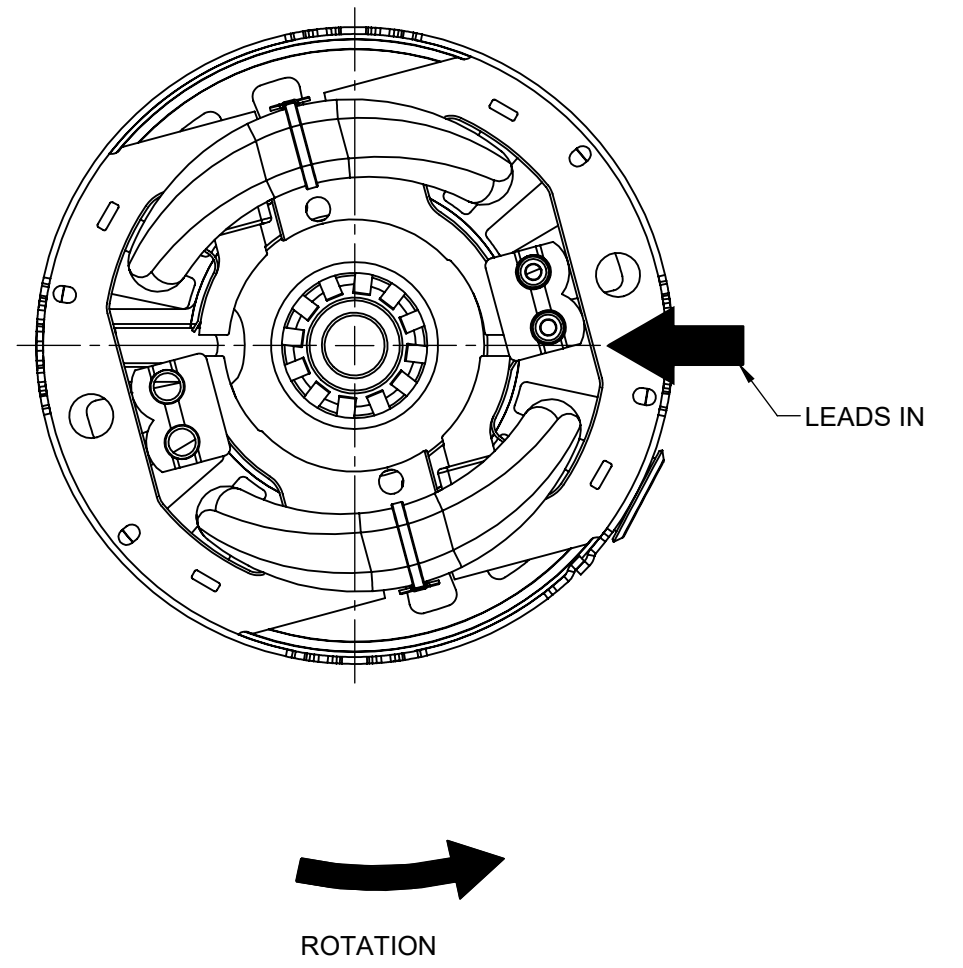
NOTES:

- 1. ALL SPACING THRU AIR BETWEEN WIRE AND METAL MUST BE AT LEAST .063 [1.60].
- 2. ASSEMBLE TERMINAL HOUSING AFTER STATOR PRESS.

BACK END



FRONT END



PACKING SPECIFICATIONS

- 1. PACK 1 PER CONTAINER, 36 CONTAINERS PER LAYER, 4 LAYERS PER PALLET, 144 MAX. PER PALLET, PACKING ASSY. 87854561, PER 88834200 AND 88834408.
- 2. CARTON LABELS MUST ALL FACE ONE DIRECTION TOWARD THE OPEN END OF THE PALLET. SEE 88834408.

DRAWING REVISION AC	REVISION BY SDM	REV DATE/@ DATE 4/26/2022	TOLERANCES (EXCEPT AS NOTED): DEC. INCH mm ANGLE	DRAWN BY MLS	Regal Beloit America, Inc.
REQUEST NUMBER ECR-0217320	APPROVED BY MLS	DATE 4/26/2022	.X ±0.1 [±3] ±1° .XX ±0.01 [±0.3] .XXX ±0.005 [±0.13] .XXXX ±0.0005 [±0.013]	DATE 1/24/2020	
REQUEST NUMBER DESCRIPTION CHANGE N/P FASCO LOGO TO FASCO TM			REMOVE BURRS & BREAK SHARP EDGES: .003/.015 [.08/.38] X 45° CORNER FILLETS: R.02 [.5] MACHINED SURFACES: .125/ mm 3.2/ INCH mm	APPROVED BY BAA	DESCRIPTION OUTLINE MOTOR ASSY
<small>COPYRIGHT (PER REVISION DATE) REGAL BELOIT AMERICA, INC. ALL RIGHTS RESERVED. PROPRIETARY AND CONFIDENTIAL INFORMATION - THIS DOCUMENT IS THE PROPERTY OF REGAL BELOIT AMERICA, INC. ("OWNER") AND CONTAINS OWNER'S PROPRIETARY INFORMATION. ANY PERSON, CORPORATION OR OTHER FIRM RECEIVING IT IS DEEMED, BY RECEIVING IT, TO AGREE THAT IT, AND/OR ANY PART OF IT, SHALL NOT BE DISCLOSED TO ANY PERSON, CORPORATION OR OTHER ENTITY, DUPLICATED, AND/OR USED, EXCEPT AS EXPRESSLY APPROVED IN WRITING IN ADVANCE BY OWNER. THIS DOCUMENT SHALL BE RETURNED TO OWNER UPON REQUEST. IT MAY BE SUBJECT TO CERTAIN RESTRICTIONS UNDER APPLICABLE EXPORT CONTROL LAWS AND REGULATIONS.</small>			THIRD ANGLE PROJECTION	DATE 1/24/2020	MATERIAL
			SIZE C	DRAWING NUMBER 71219730	PROCESS/FINISH BLACK

4

3

2

1